

NAPLES CITY DOCK



CONSTRUCTION HISTORY
GRAND OPENING MARCH 2018



Introduction

In 2017 the City of Naples proceeded with construction of a new City Dock in the heart of town. The new dock replaced an old wooden structure which had deteriorated to the point that constant maintenance was required due to continued safety concerns. The new dock was built with a wooden approach pier from shore ramping down to floating docks used to accommodate the charter fishing fleet and private boat slips. The new docks are made of concrete floats filled with foam and have chaseways within them for utilities. Concrete floats also support three buildings on the dock including the harbormaster's office, a gazebo for public gatherings and the restroom complex. Built in Jacksonville, the floats were scheduled to arrive the week Hurricane Irma impacted Naples with wind gusts over 140mph. The delivery was delayed and the docks were spared any possible damage, unlike many other structures in Naples. The project was completed on time and under budget. The new Naples City Dock was officially opened on March 3, 2018 with a waiting list of boats wanting to moor there.



Above: City Dock circa 1960 with covered boat slips off of a main pier built in the same approximate location as today. This photo was taken prior to the creation of land for the Cove Inn to the north (to right) where palm trees then lined Naples Bay.



Right: Later photo of City Dock looking north, with the Cove Inn built on a new peninsula of land constructed into Naples Bay with fill dredged from shallow bay waters.





2017 Original Conditions

The City Dock had been undergoing regular repairs for decades when plans were finally made to replace it around 2015. The old dock was comprised of wood pilings and decking with wood timber buildings for the dockmaster's office and public restrooms. Charter boat slips lined the main pier and at low tide older fishing guests would have trouble getting on and off boats which would be several feet below the dock's surface. The pilings had been compromised over time by marine organisms at the waterline and were deteriorated. Wood decking and the framing that supported it had rotted in areas where repairs were frequently needed. The fuel dock did not have sufficient room to service all the boats that would line up and the fuel pumps were slow for filling large vessels. Another problem was the size of the old boat slips did not match newer boat designs, which typically have wider beams (widths) for a particular length of vessel. This limited demand from newer boat owners who were willing to pay more for dockage. The continued deterioration of the structure eventually caused partial failure a week before demolition commenced.

2018 Final Design

The new layout has a wood fixed access dock at the same elevation as the shoreline. The dock extends to a large platform where an aluminum gangway provides access to the floating docks. The gangway is designed to maintain a safe slope even at low tide. Charter boats that line the new floating dock no longer have a problem with guest access at low tide since the dock now floats with the boat, so the step into the boat is always the same. The concrete floats are filled with foam and designed to withstand hurricane force winds. Pilings that guide the docks up and down on the tide are also made of concrete and will not rot like the previous wood pilings. The dockmaster's office along with the restroom complex and gazebo are built to withstand 170mph winds and will not be subject to most storm surge damage like land based structures since they float. Docks are now built to modern boat dimensions and a waiting list for the new slips developed before the facility opened, even at higher rates for dockage. New fuel pumps are much faster with a larger fuel dock that can accommodate more traffic, so fuel sales and public convenience should improve greatly. The new design greatly approved ADA access to charter boats and many slips throughout the marina. With 480 feet of open face dock, the facility can accommodate any size vessel visiting Naples Bay.





*Grand Opening of
Naples City Dock,
March 3, 2018.*



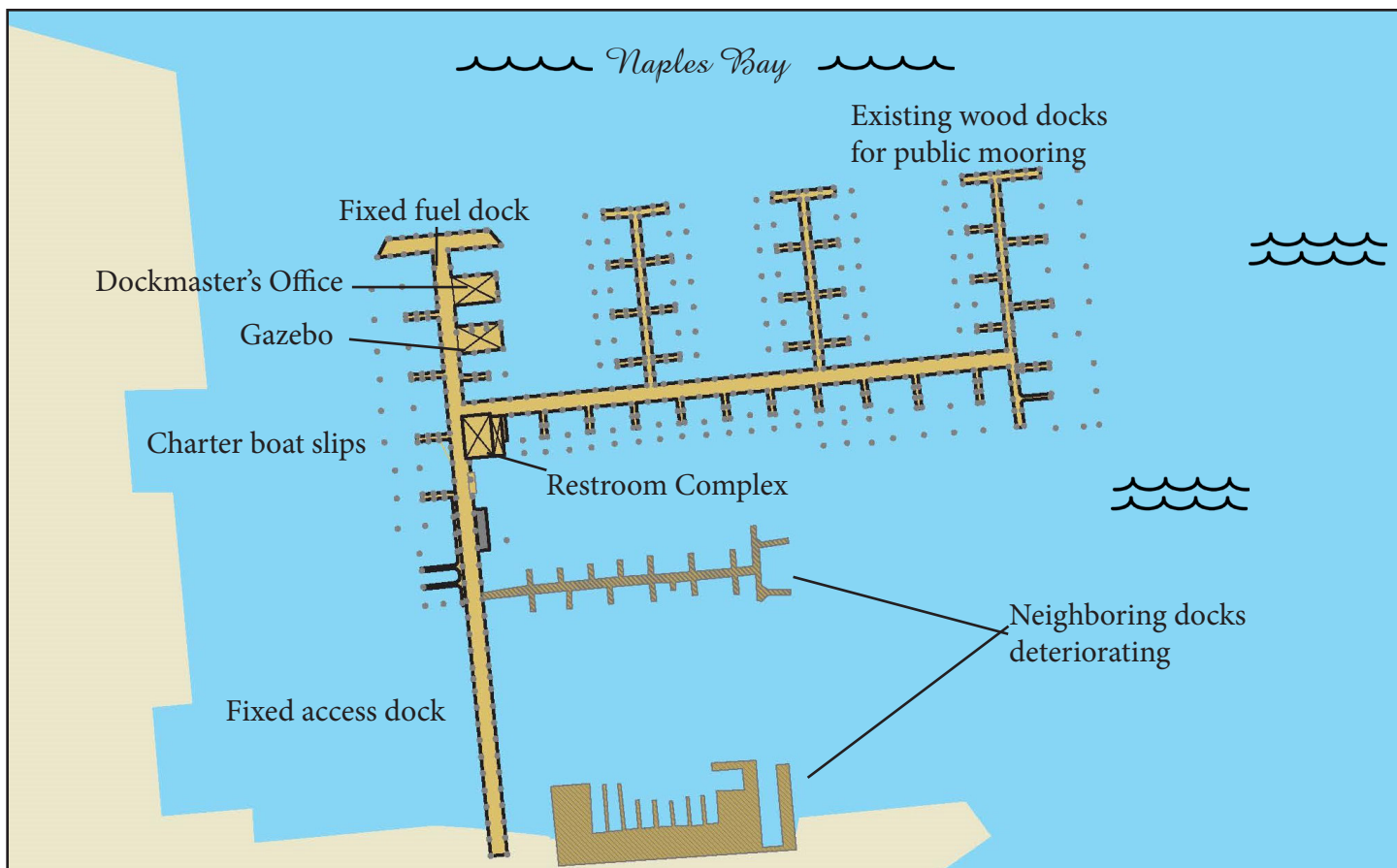
*Left:
Plaque at Naples
City Dock.*



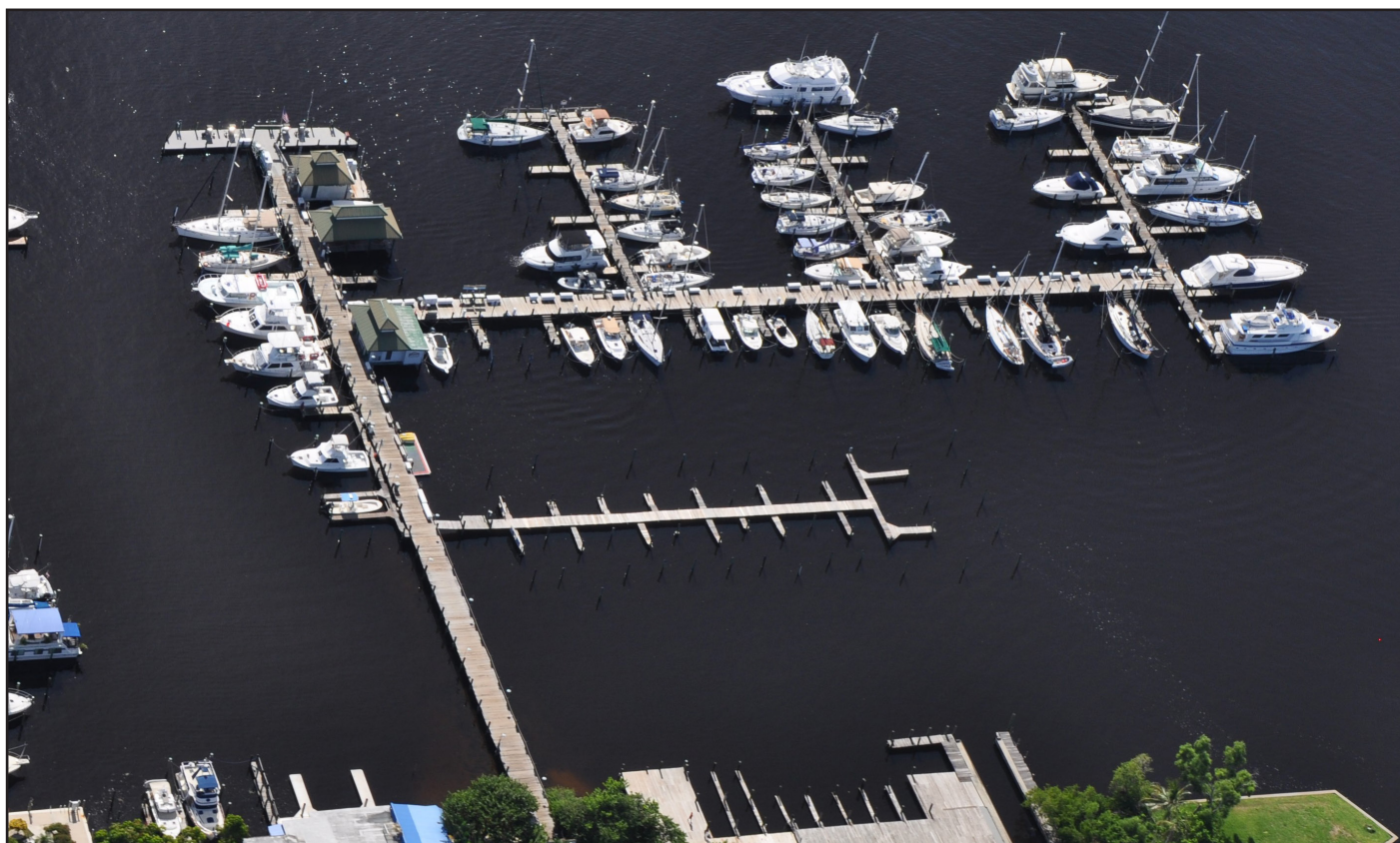
Concrete Floating Dock system by Bellingham Marine.



Naples City Dock Plans Before Construction



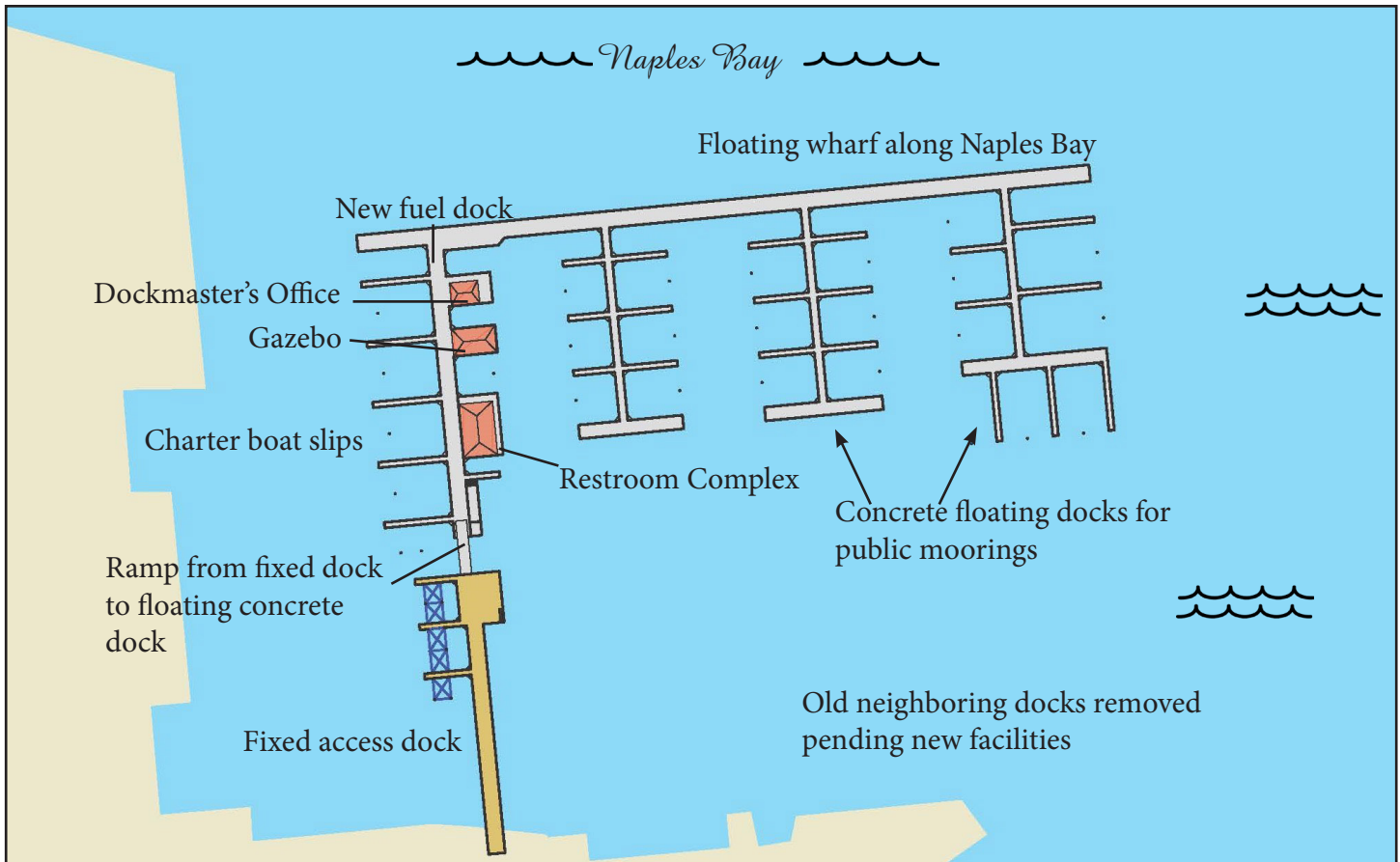
Dock plan prior to new construction.



Old City Dock prior to rebuilding, dilapidated wood docks and pile supported buildings.



City Dock Plans After Construction



New dock plan.



The new City Dock with floating concrete docks and public buildings completed in March 2018.



Dockmaster's Office, Gazebo and Restroom Complex



Gazebo lounge area.



Interior of the Dockmaster's Office.



Construction Progress of the Floating Buildings



From left to right:
Restroom Complex,
Gazebo and
Dockmaster's Office.



Bellingham Concrete Floating Docks - Constructed in Jacksonville, Florida



Concrete floating dock in form curing.



Foam for the dock interiors.



Floats stacked and curing, utility "chase" (special openings where the electric lines run through the concrete) shown on sides.



Floats in Jacksonville ready for shipment.





Massive concrete floats for City Dock's Restroom Complex in Bellingham's Jacksonville yard awaiting transport.



Concrete floating dock alongside barge on site, being moved into position. Note chases inside of dock.

Concrete float for City Dock's Restroom Complex is put in place during construction. One section of dock ready to be joined with the next to create the base floor for vertical construction.



Aerial Progression



The old City Dock, 2016.





Prior to demolition, August 2016.



Demolition begins May 2017.





Construction staging area courtesy of adjacent property owner.



Demolition of the old wood docks in progress.



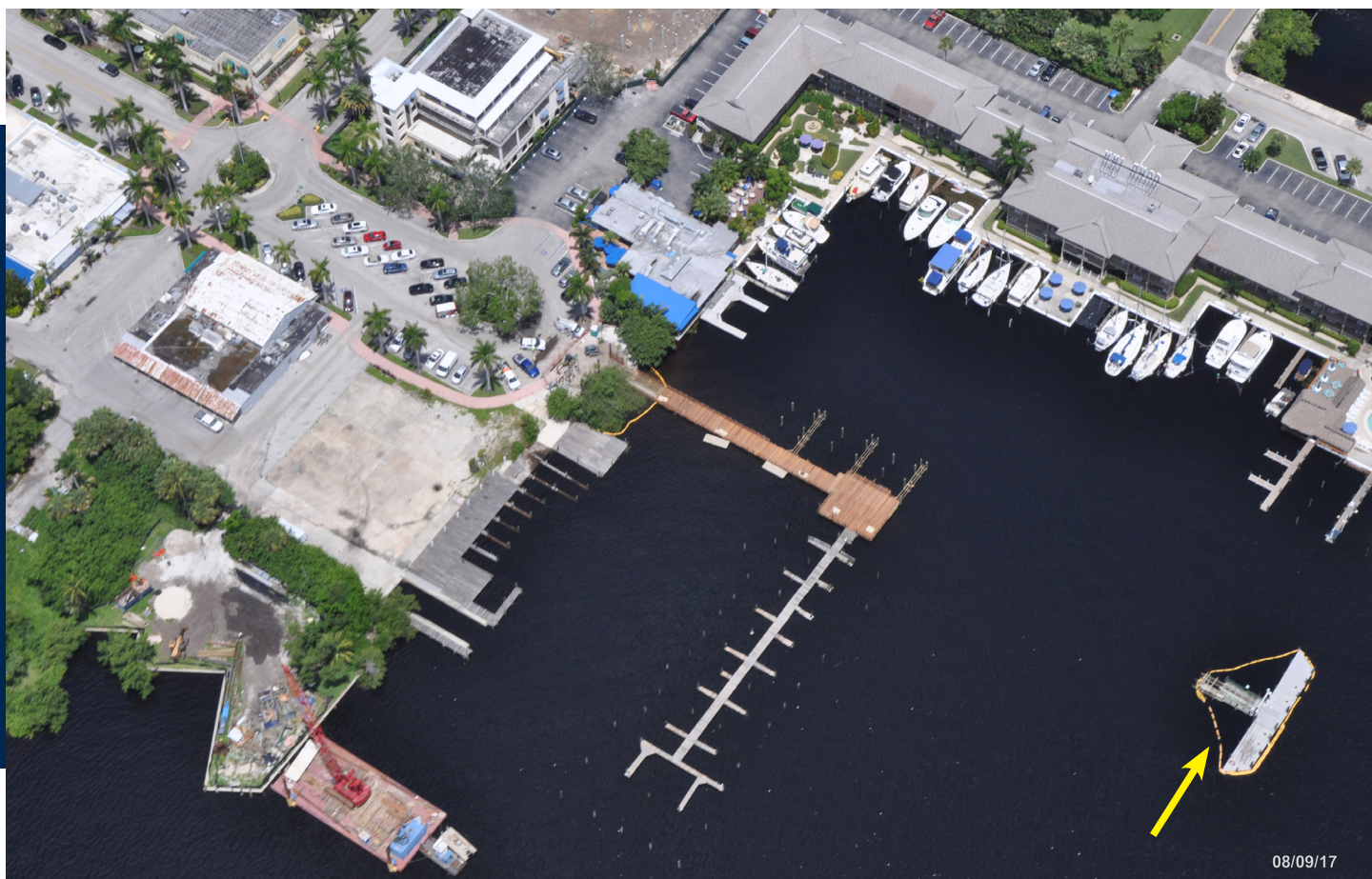


Framing for fixed access dock being completed.

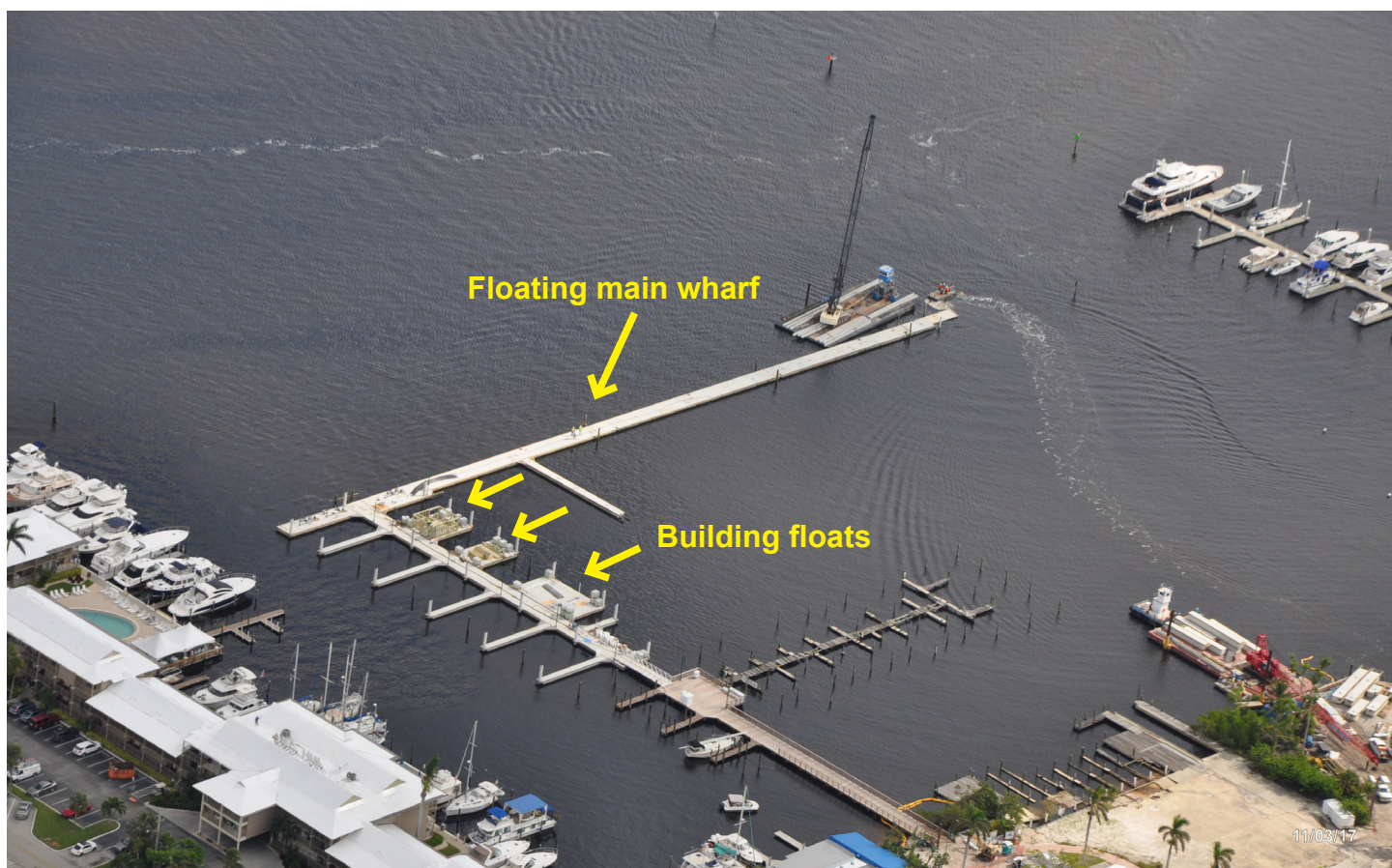


IPE decking complete on fixed access dock.





Staging area to left. The old dock (surrounded by yellow turbidity curtain) remains for survey control.



New floating main wharf developing along Naples Bay, three floats in place for building construction.





12/06/17

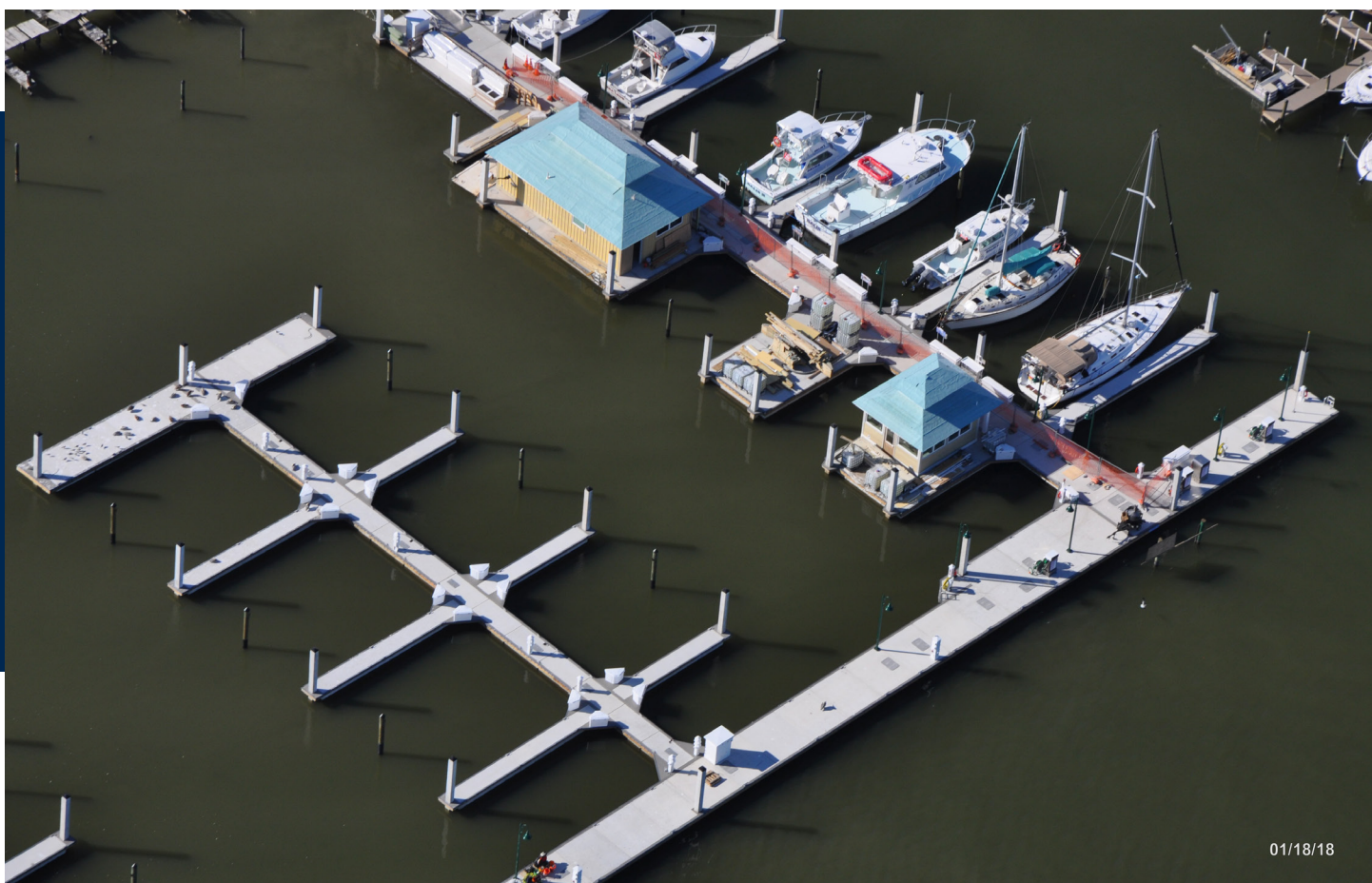
Concrete docks being constructed, Dockmaster's Office and Restroom Complex taking shape.



01/18/18

Final installation of docks and main wharf on Naples Bay complete.





Roofs complete on Dockmaster's Office and Restroom Complex, Gazebo still under construction.



All buildings completed and roofs are in place.





03/03/18

City Dock on Grand Opening Day, March 3, 2018.



03/03/18

City Dock on opening day (center), Naples Yacht Club at top, Cove Inn at bottom.



Construction Photos



Naples City Dock entrance at the start of construction.



Demolition begins.





New pilings arrive for the fixed access dock.



Decking is removed from the old fixed dock.





Yellow turbidity curtain keeps debris contained in demolition area.



New pilings installed for the fixed access dock.





Above and below: Framing going in for new dock.



Close up of the framing work being done.





Framing and utility conduits in place.



IPE decking going on the end platform of the fixed access dock.





Framing for the fixed access dock from shore.



Finishing the end platform, note space in railing (circled) ready for gangway attachment to the concrete dock.





Hurricane Irma damage to the neighboring docks.



More damage to adjacent docks from Hurricane Irma.





Concrete control piles arrive that will be used to keep the floating docks in place.



Concrete float for the Dockmaster's Office in place with concrete control piles.





Fishing charter fleet docks taking shape.



Building float in place with water tank ballasts to compensate for the building to come.



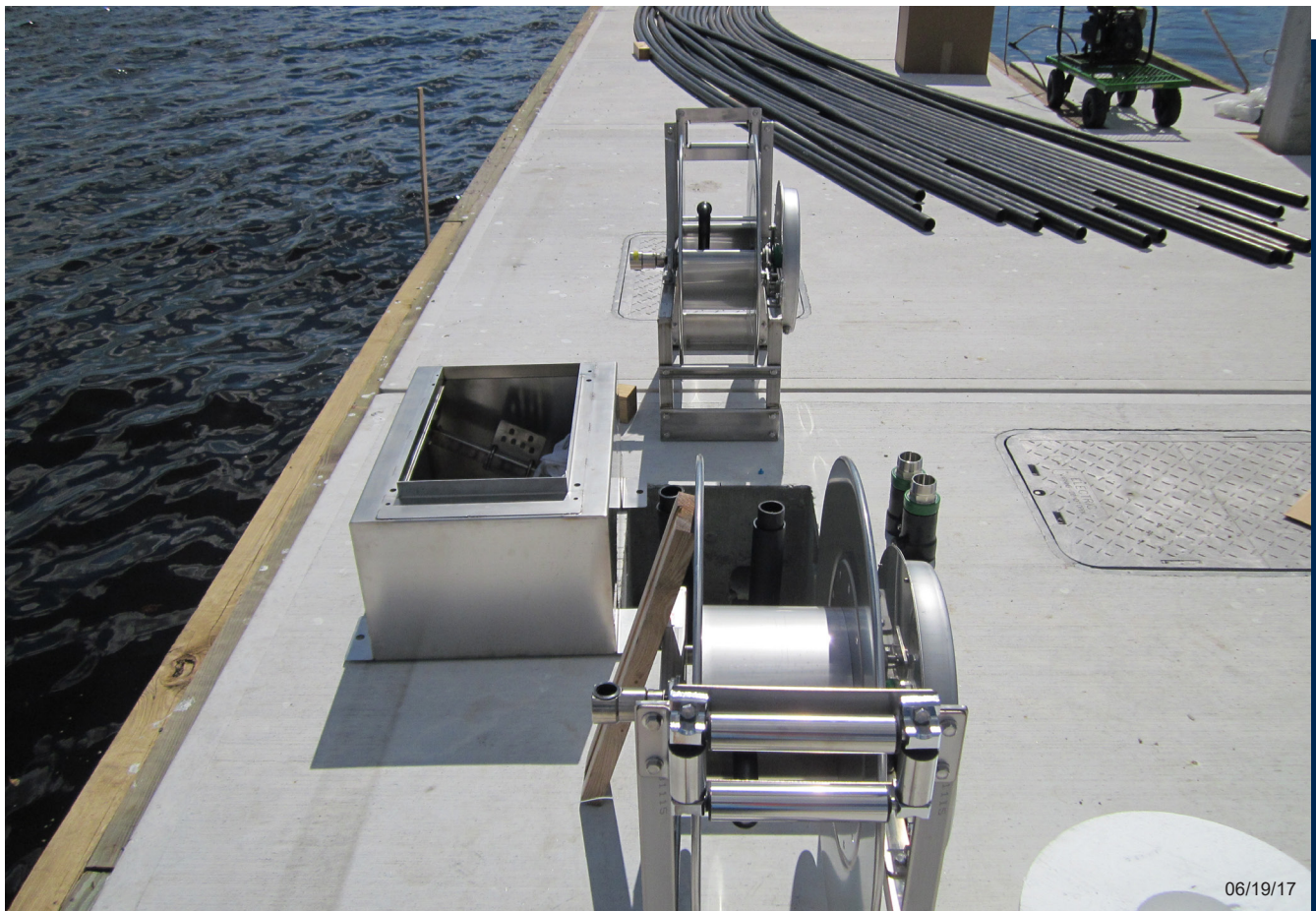


Aluminum gangway to floating docks being installed.



Fuel dock construction on the main wharf along Naples Bay.





Fuel pump bases and hose reels being installed at fuel dock.



Dockmaster's Office framing begins.





Concrete float for Restroom Complex in place and ready for building structure.



Aluminum gangway in place and secure between fixed access dock and floating dock.





Roof work begins on Dockmaster's Office.



Framing for the Restroom Complex.





Restroom Complex starting to take shape.



Dockmaster's Office ready for final roof and siding.





Interior windows installed in Dockmaster's Office.



Framing material for Gazebo arrives, the last building to be completed.





Structural attachment, built to withstand 170mph winds.



Charter boats return and fishing begins January 2018.





Dockmaster's Office with roof, door, and windows complete.



Typical brass ship lighting fixtures in place on the exterior structures.





Dockmaster's Office interior almost complete.



Gazebo construction begins.





Framing for the Gazebo going up.



Gazebo roof progressing.





Building construction continues, roof work on Dockmaster's Office.



Large electrical transformer on bay front wharf with smaller pedestals for boat plug in shore power.





Restroom Complex ready for siding, Gazebo taking shape, Dockmaster's Office almost complete.



Completing final details of the Dockmaster's Office.





View down main wharf on Naples Bay, with shore power electric pedestal in place and ready for boats.



Concrete compass rose artwork at entrance of Naples City Dock.





Entrance to the new Naples City Dock.



From right to left: Dockmaster's Office, Gazebo and Restroom Complex.





New fuel dock, pumps and safety equipment.



Gazebo for public relaxation.





Interior of Dockmaster's Office.



Entrance to Restroom Complex.





Interior of the men's restroom facilities.



Laundry facilities.





The fixed dock access pier leading to charter boats and concrete floating docks.



The main wharf along Naples Bay.





Boats docked at the new Naples City Dock.



Boats at C Dock.





The front of C Dock.



View down D Dock.





View from the front of D Dock.



Boats along E Dock.

